



## Railway Bridge View - creating a dementia friendly home.



### Railway Bridge View

Railway Bridge View, Brighthouse, is one of our first services where we hope to deliver person-centred and reablement focused personal care and provide a hub that engages with the local community.

It will keep our customers active for longer, less isolated and empowered to do the things they love whilst reducing their dependency on primary care services by managing their conditions in our service. It includes 23 two-bed and 42 one-bed apartments, available for affordable rent with five available for shared ownership.

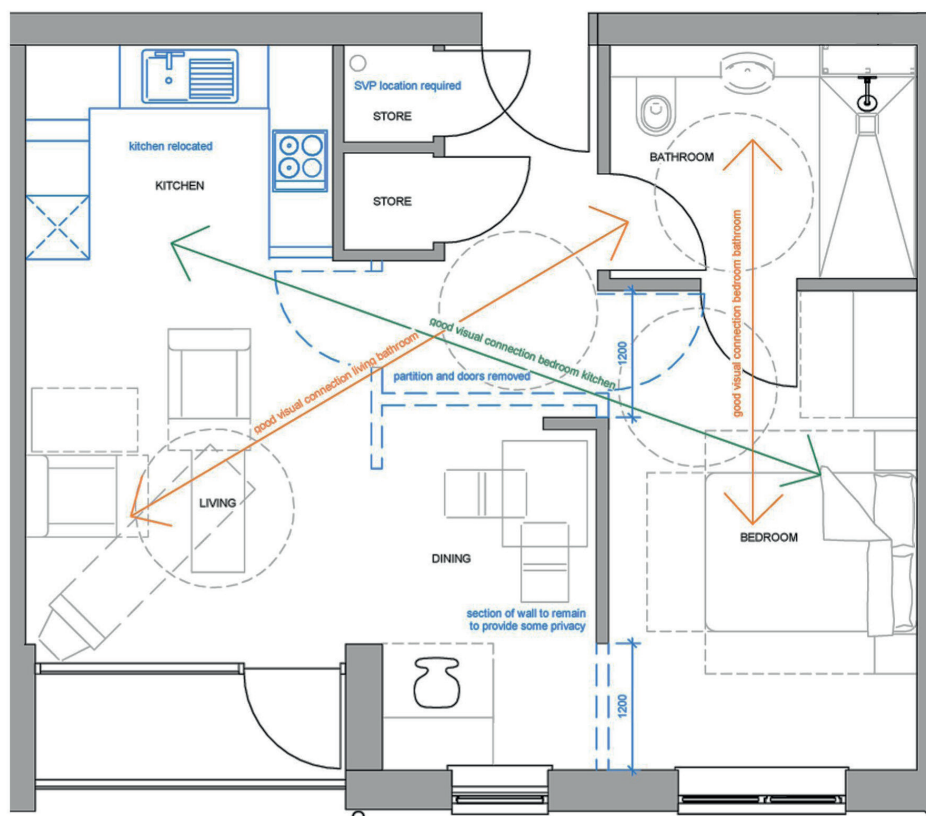
Ten of the apartments will have a dementia focus.

Railway Bridge View will also have a range of commercial services to access including a restaurant, café and hairdressers.

We will offer 24 hour support for our customers providing a range of interventions via our reablement and lead reablement workers.

Reablement workers differ from existing care workers due to the approach they will be utilising when providing personal care and because they will be trained to spot deterioration and escalating it where appropriate.

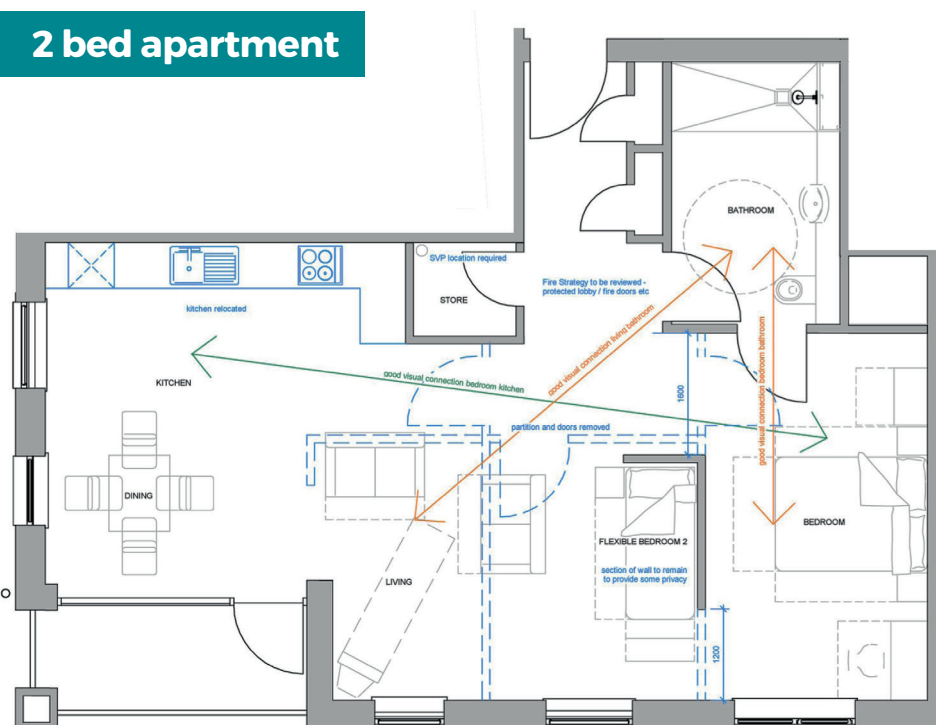
## 1 bed apartment



### What we've done

- Different environments across the building
- Secure communal garden with sensory area
- Secure access throughout
- Colour differentiation
- Cupboard doors PRI activated
- No shiny/reflective surfaces
- Contrasting colours in the kitchen between floors, units, splash backs, wall colours
- Light switches contrast with wall colours
- Mirrors have either a roller blind or within a cupboard
- Four apartments being open plan
- Assistive tech (including family app)
- Fully DDA compliant

## 2 bed apartment



Railway Bridge View is a partnership between



**Gemma Hutchinson**

Mobilisation Manager

**07917 350499**

**gemma.hutchinson@homegroup.org.uk**

**www.homegroup.org.uk**